

# NZBEL Contact Information

## Physical Address:

SMS Ltd

NZ BioSecure

Entomology Laboratory

First Floor

2-4 Bell Road South

Lower Hutt

## Postal Address:

SMS Ltd

NZ BioSecure

Entomology Laboratory

PO Box 38 328

Wellington Mail Centre

5045

PHONE: 04 566 3311 ext 2

URGENT Entomology: 021 522 476

WEB: [www.smsl.co.nz](http://www.smsl.co.nz)

See the website for full contact details

# Southern Monitoring Services Ltd

*Southern Monitoring Services Ltd (SMS) is a New Zealand company providing Training, Biosecurity, Waterways, Noise, Building and Consultancy services including Environmental, Occupational Health & Safety, Food Safety, Risk Assessment, and Audits. We operate throughout New Zealand providing services to government departments, industry, community organisations local government and the public. Our approach to professional services is based on close consultation with clients and cost effective delivery of services supported by a full commitment to quality.*

## SMS operates six business divisions:

SMS Consultancy

SMS Training

SMS Noise

SMS Biosecurity

SMS Waterways

SMS Buildings

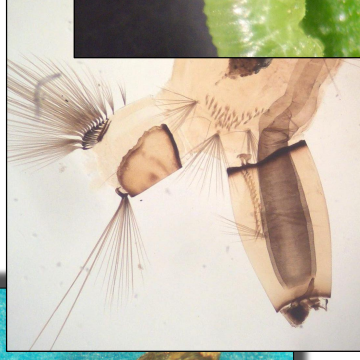
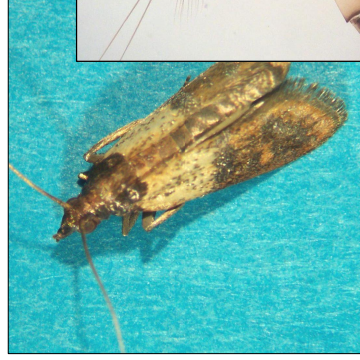
New Zealand BioSecure is a trading name for SMS Biosecurity.

## Mission Statement

*SMS will continue to be a leading provider of Training, Biosecurity, Waterways, Noise, Building and Consultancy services including Environmental, Occupational Health & Safety, Food Safety, Risk Assessment, and Audits utilising proven expertise and experience in the planning and implementation of high quality and cost effective strategies for a diverse range of clients.*

# New Zealand BioSecure

## Entomology Laboratory

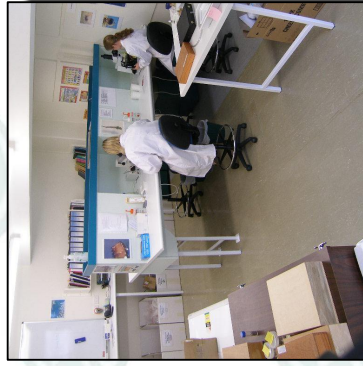


# New Zealand BioSecure Entomology Laboratory

The New Zealand BioSecure Entomology Laboratory (NZBEL) is a Central Government contracted laboratory located at the Gracefield Research Centre in Lower Hutt. NZBEL personnel are highly qualified and have extensive laboratory and field experience. See our website for further information.

The NZBEL provides the following services:

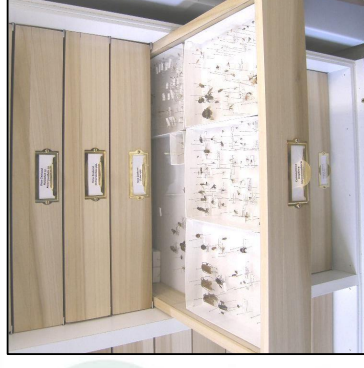
- ✿ Invertebrate identifications
- ✿ Entomological Research
- ✿ Surveillance and Monitoring
- ✿ Biosecurity Training
- ✿ GIS mapping
- ✿ Product testing
- ✿ Mosquito and Midge control
- ✿ Mosquito related consultancy
- ✿ Provision of mosquitoes, live or dead, for research



New Zealand BioSecure Entomology Laboratory



Monitoring willow defoliation by Willow Sawfly



Preserved Reference specimens storage cabinet

## The NZBEL has been involved in:

- ✿ Mosquito Eradication Programmes
- ✿ Public Health Mosquito Surveillance and Control
- ✿ Port Surveillance: Exotic Mosquito Interception Response
- ✿ National Saltmarsh Surveillance Programme
- ✿ Willow Sawfly Control Research
- ✿ Blackfly Control Research
- ✿ Mass rearing mosquitoes for research
- ✿ National Biosecurity Training
- ✿ Mosquito Related Health and Environmental Consultancy

## Clients have included:

- ✿ The Ministry of Health
- ✿ The Ministry of Agriculture and Forestry
- ✿ Regional Public Health Services
- ✿ Hawke's Bay Regional Council
- ✿ New Zealand Defence Forces
- ✿ Helicopters Hawke's Bay
- ✿ Mosquito and Pest Services Pty. (Australia)
- ✿ Crop and Food Research Ltd.
- ✿ AgResearch Ltd.
- ✿ SMS Training



Mosquito larvicide efficacy trials



© 2002. M. Disbury, www.smsl.co.nz

Adult female Southern Saltmarsh mosquito

Cover photographs, listed clockwise from top left: Indian Meal Moth, Southern Saltmarsh mosquito larva terminal segments, Willow Sawfly larva, Willow Sawfly Adult, Chorus Cicada, Blackfly larva

